

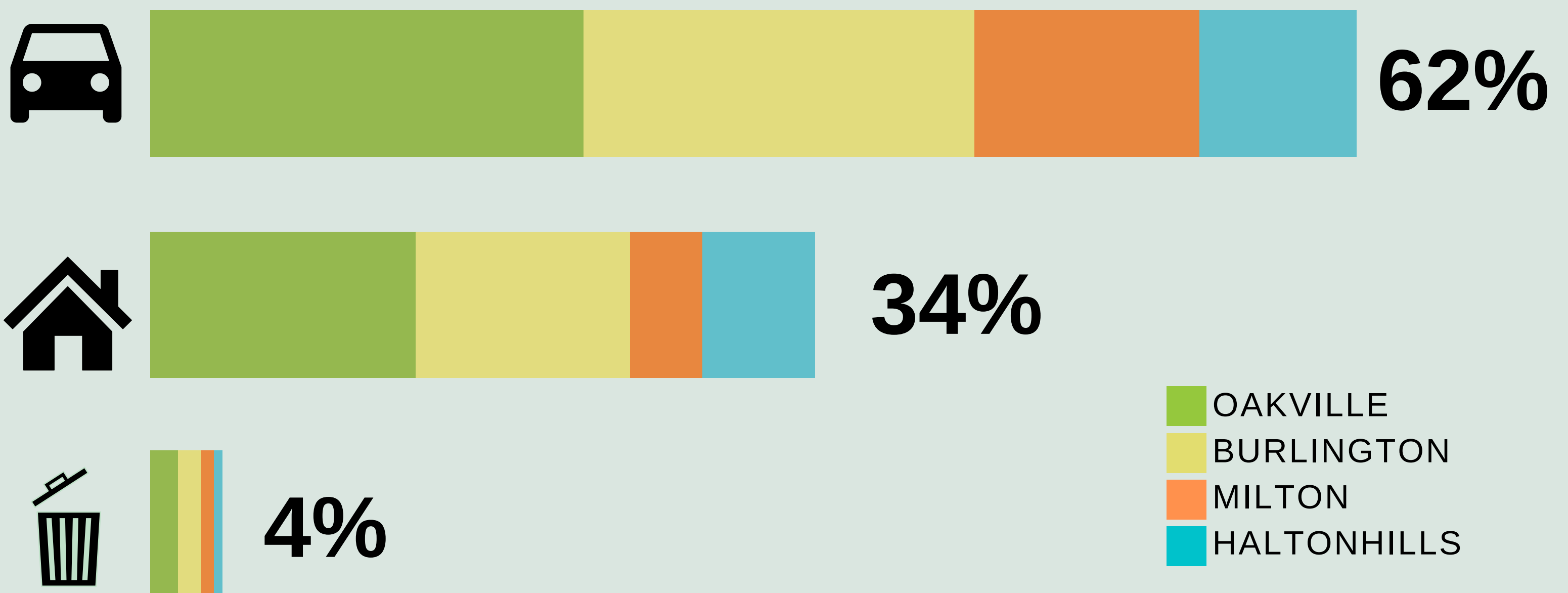
EVERY ACTION COUNTS

You asked. We measured.

We determined the amount of greenhouse gases emitted from Halton residents' homes and personal vehicles.

The Largest Sources of GHG Emissions in 2017 in Halton were:

GHGs include carbon dioxide (CO₂), methane (CH₄), and nitrous oxide (N₂O), among others



In 2017, households in Halton emitted...



2.2mil
tCO₂eq* as a community



10.65
tCO₂eq per household

A path to net-zero emissions by 2050 requires substantial reductions.

A reduction of 30% by 2035, requires emitting **7.45** tCO₂eq



A reduction of 90% by 2050, requires emitting **1.07** tCO₂eq



*tCO₂eq = tonnes of CO₂ equivalents



@HALTONCLIMATECOLLECTIVE



@HALTONCLIMATE



WWW.CLIMATECOLLECTIVE.CA

EVERY ACTION COUNTS

You spoke. We listened.

Here is what we've learned from over 2400 Halton residents.*

*Please note survey data was collected pre-COVID-19

The Halton Community...



18% Considered flying less



22% Helped conserve green space



23% Used public transit instead of driving



31% Biked instead of driving



41% Spoke up about Climate Change



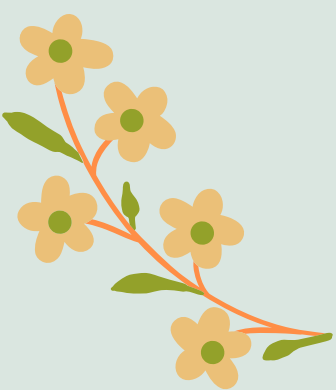
59% Chose meat-free meals



60% Reduced food waste



72% Walked instead of driving



73% Resisted buying something to reduce resource consumption



We can all act on climate change.



Halton
Climate
Collective



@HALTONCLIMATECOLLECTIVE



@HALTONCLIMATE



WWW.CLIMATECOLLECTIVE.CA